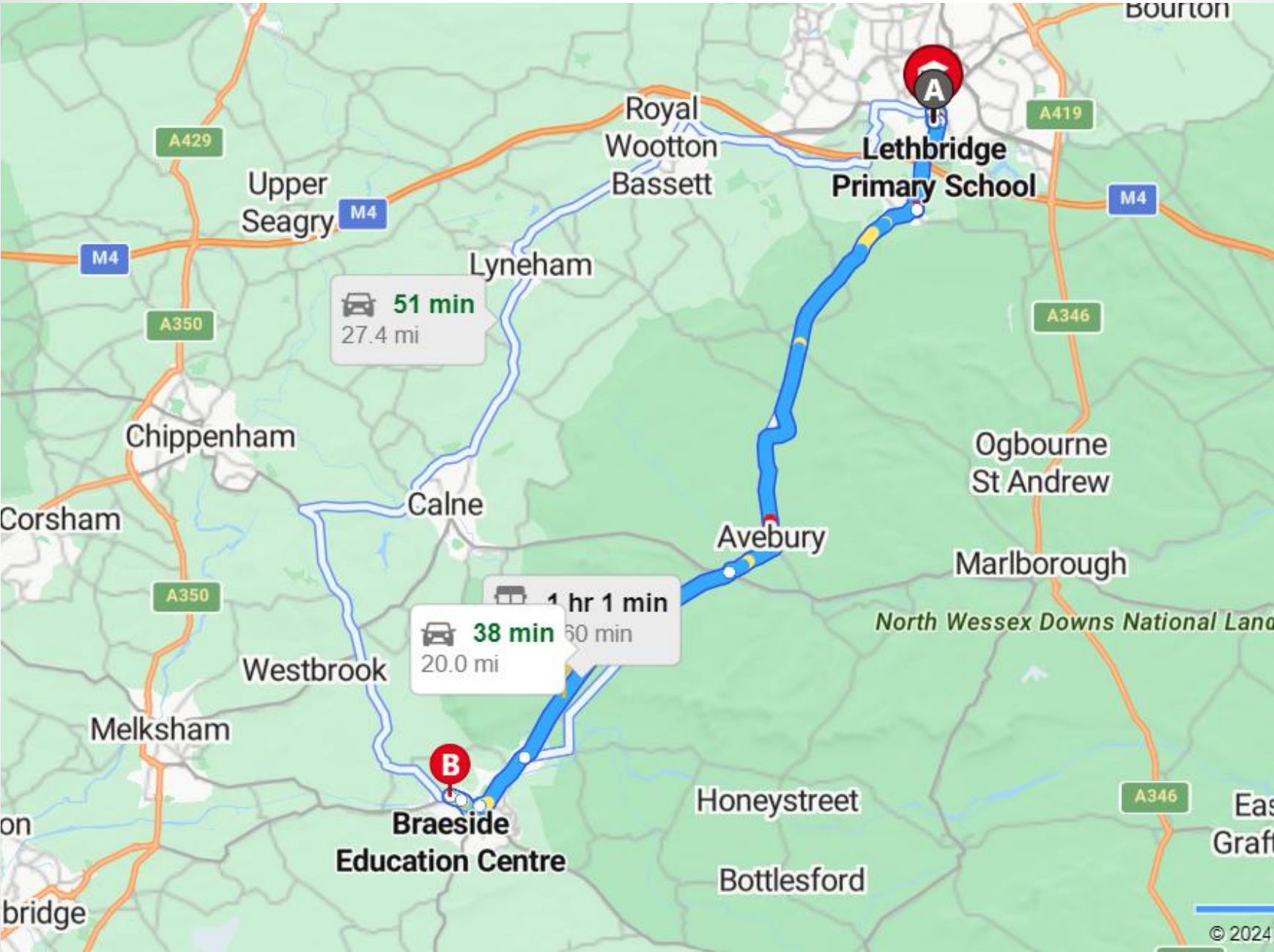


# **Braeside Information Meeting**

**Monday 13<sup>th</sup> October –  
Thursday 16<sup>th</sup> October 2025**

<https://www.braeside-education.co.uk/>

# **Importance of Residentials**



# Overview of proposed residential

- 4 day, 3 night residential for year 6 children
- Arrive at Braeside for 10am
- Depart Braeside at 2pm
- **Monday 13<sup>th</sup> October – Thursday 16<sup>th</sup> October 2025**

# Examples of activities

- Archery
- Leap of faith
- Low ropes
- Lifeline
- Shelter building
- Fire lighting
- Problem solving
- Orienteering
- Climbing and zipwire
- Canoeing at Devizes Wharf
- Night line
- Film night













# Archery





# Fire Lighting





# Shelter Building





# Orienteering





# Climbing



# Zipwire





# Leap of faith



# Bouldering





# Low ropes



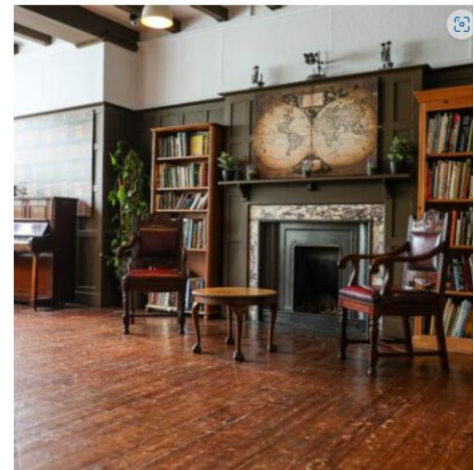




# Accommodation

<https://www.braeside-education.co.uk/accomodation/>

- Beds are made up ready for arrival, with sheets, pillows, duvets and linen
- Bedrooms are located on the first and second floors in the Main House
- There is a separate Dining Hall building, within close proximity of the main house, containing a commercial kitchen, serving hatch and dining area.



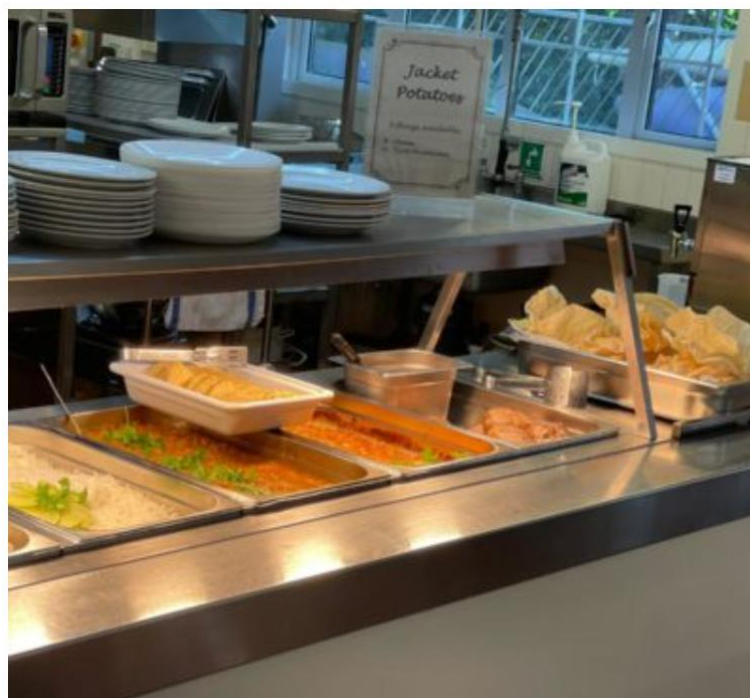
# Food

**- Experienced with catering for all diets, allergies, fussy eaters etc.**

## **Procedures in place at Braeside:**

- Alternative meal options are as like for like as possible
- Braeside staff are passed all dietary information from the school and this is distributed to the entire team.
- Snacks/lunchboxes are labelled with children/staff names
- Allergen preparation area in the kitchen with allergen chopping board, equipment and utensils (including gluten free toaster)
- Allergen area in the dining hall for self-service breakfast with alternative cereals and milks (soya and oat)
- Individual packaged consumables such as butter, flora, jam, sauces
- Separate containers and tongs in the salad bar with clear labels for all allergens
- Children with dietary requirements are served first for all meals (this is done respectfully with the aid of accompanying teachers)





### *5 Day Sample Menu - Braeside Education Centre 2024*

DAY 1	DAY 2	DAY 3	DAY 4	DAY 5
	<b>Breakfast</b> <b>Served at 8:00am</b>	<b>Breakfast</b> <b>Served at 8:00am</b>	<b>Breakfast</b> <b>Served at 8:00am</b>	<b>Breakfast</b> <b>Served at 8:00am</b>
	Pain au Chocolat Cereal selection with Semi Skimmed Milk Toast & Spreads Fresh Fruit Tea, Coffee, Water & Fruit Juice	Freshly Baked Croissant Cereal selection with Semi Skimmed Milk Toast & Spreads Fresh Fruit Tea, Coffee, Water & Fruit Juice	Bagels Cereal selection with Semi Skimmed Milk Toast & Spreads Fresh Fruit Tea, Coffee, Water & Fruit Juice	Waffles Cereal selection with Semi Skimmed Milk Toast & Spreads Fresh Fruit Tea, Coffee, Water & Fruit Juice
	<b>Lunch</b>	<b>Lunch</b>	<b>Lunch</b>	<b>Lunch</b>
	<b>Packed Lunch</b> Sandwich, Fruit, Crisps, Cherry Tomatoes, Raisins, & Biscuit Bar	<b>Packed Lunch</b> Sandwich, Fruit, Crisps, Cherry Tomatoes, Raisins, & Biscuit Bar	<b>Packed Lunch</b> Sandwich, Fruit, Crisps, Cherry Tomatoes, Raisins, & Biscuit Bar	<b>Packed Lunch</b> Sandwich, Fruit, Crisps, Cherry Tomatoes, Raisins, & Biscuit Bar
<b>Dinner</b> <b>Served at 5:30pm</b>	<b>Dinner</b> <b>Served at 5:30pm</b>	<b>Dinner</b> <b>Served at 5:30pm</b>	<b>Dinner</b> <b>Served at 5:30pm</b>	
Fish & Chips served with peas & baked beans. Salad Bar including Jacket Potatoes with various fillings  Ice Cream Fresh Fruit & Yoghurts	Pasta Night Penne pasta served with tomato and basil sauce, cheese sauce, grated cheese, garlic bread and crispy fried onions. Salad Bar including Jacket Potatoes with various fillings Muffins Fresh Fruit & Yoghurts	Sausages served with mashed potato, peas & gravy. Salad Bar including Jacket Potatoes with various fillings  Strawberry Cheesecake Fresh Fruit & Yoghurts	Margherita Pitta Pizza served with potato wedges and sweetcorn. Salad Bar including Jacket Potatoes with various fillings  Sugar Ring Doughnuts Fresh Fruit & Yoghurts	

# Sample Menu



# Cost

- Total cost is approximately **£390**
- This cost includes:
  - a coach to and from Braeside
  - accommodation
  - food and drink
  - all the activities

# Next Steps

- If you would like your child to attend the residential, you will need to pay a **deposit of £75 by Sunday 2<sup>nd</sup> March**
- This will be a non-refundable deposit
- The deadline for the remaining cost of **£314** will be **Sunday 31<sup>st</sup> August 2025**
- A payment plan will be set up with monthly payments of approximately **£62.80 per month** (April, May, June, July and August) or you have the option to pay in full
- If you receive free school meals, please contact the school office



# **My Braeside Experience**

Letters from year 6 children to year  
5 children

# Any questions?